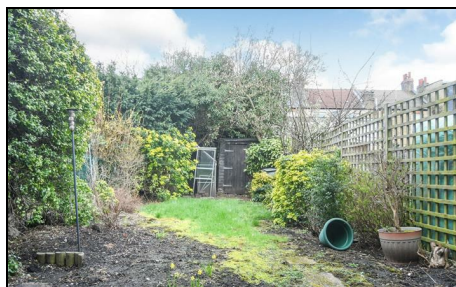


## Clarence Road Wimbledon, SW19 8QB

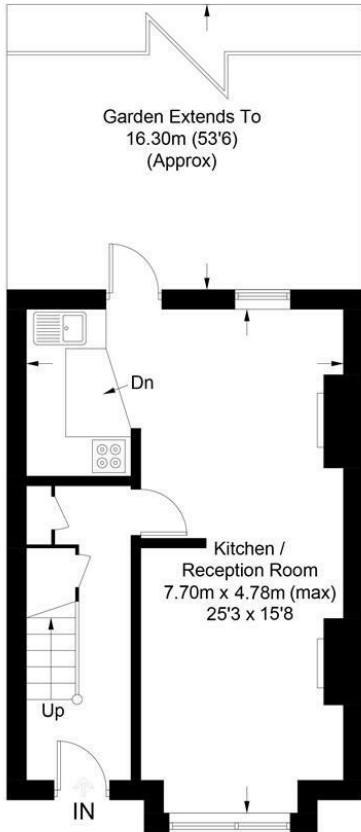
£750,000 Freehold



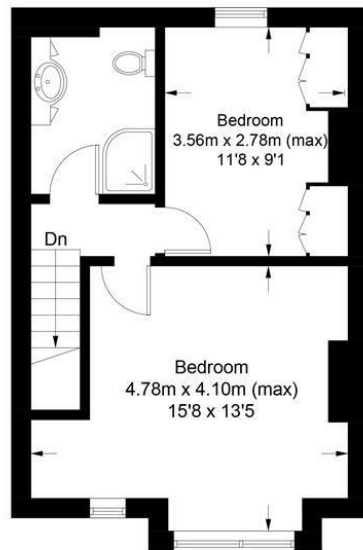
**A two double bedroom Victorian home in need of modernisation located close to South Park Gardens, Wimbledon town centre and Holy Trinity School. With potential to extend subject to the usual consents and no onward chain this is a great opportunity to put your mark on a house in this desirable location.**

## Clarence Road, SW19

Approximate Gross Internal Area = 72.1 sq m / 776 sq ft



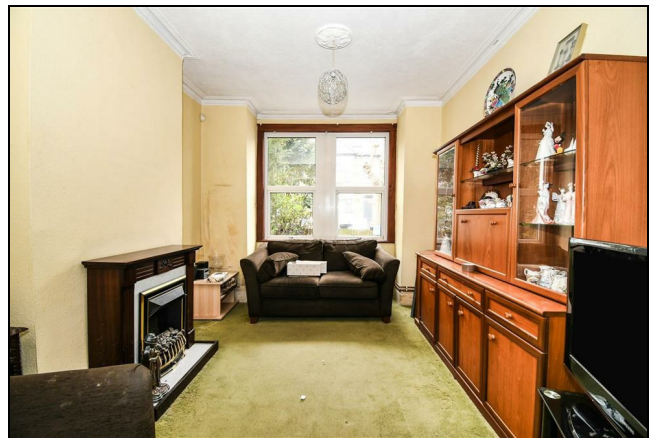
**Ground Floor**



**First Floor**

This floor plan is for representation purposes only and is not drawn to scale.  
**The Gross Internal Area includes outbuildings shown on the plan.**  
 Whilst every attempt has been made to ensure the accuracy of the plan measurements of doors, windows and rooms are approximate only and should be checked before making any decisions reliant upon them.  
 Copyright Bespokeplans.co.uk (ID739805)

- Two Bedroom Victorian Home
- In Need of Modernisation
- Potential to Extend STPP
- No Onward Chain
- Sought After
- Close to Holy Trinity School
- Close to Wimbledon Town Centre



Energy Efficiency Rating		Current	Potential
Very energy efficient - lower running costs			
(92 plus) <b>A</b>			
(81-91) <b>B</b>			
(69-80) <b>C</b>			
(55-68) <b>D</b>			
(39-54) <b>E</b>			
(21-38) <b>F</b>			
(1-20) <b>G</b>			
Not energy efficient - higher running costs			
<b>England &amp; Wales</b>	EU Directive 2002/91/EC		

Environmental Impact (CO <sub>2</sub> ) Rating		Current	Potential
Very environmentally friendly - lower CO <sub>2</sub> emissions			
(82 plus) <b>A</b>			
(81-91) <b>B</b>			
(69-80) <b>C</b>			
(55-68) <b>D</b>			
(39-54) <b>E</b>			
(21-38) <b>F</b>			
(1-20) <b>G</b>			
Not environmentally friendly - higher CO <sub>2</sub> emissions			
<b>England &amp; Wales</b>	EU Directive 2002/91/EC		

For Free Mortgage Quote and Best Mortgage Rates, call an Ellisons Mortgage Advisor on 020 8944 9494



Although these particulars are believed to be correct, their accuracy is not guaranteed and they do not form part of any contract.

Celebrating 30 years of successful Sales and Lettings in Merton

